

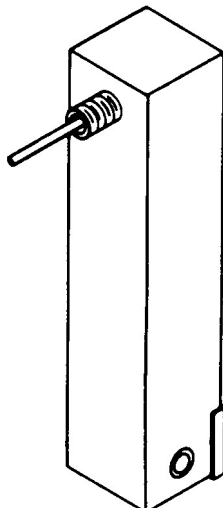
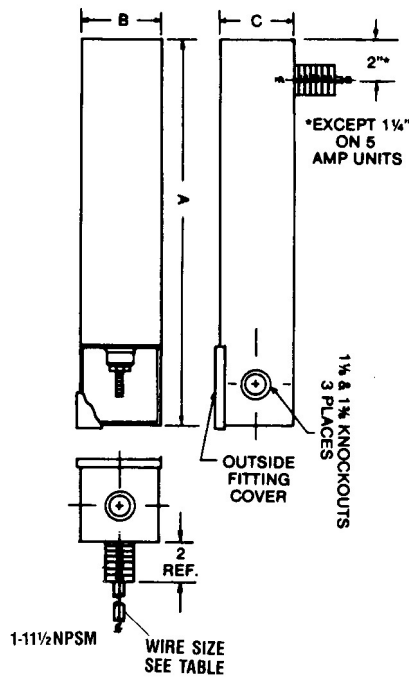


# RF Power Line Penetration Filters for shielded enclosures (FCP-11, -12, -22, -23)

## HIGHLIGHTS

This series of Power Line Penetration Filters can be mounted through the outer wall of a shielded enclosure. The filters are RFI secure and supplied with threaded nipple. Filters supplied with bleeder resistor to prevent shock hazard.

Filters are also available with surge arresters



These Filters are available in four series

**FCP-11: (60Hz)**  
**FCP-12: (400Hz)** 100dB attenuation from 100 kHz to 10 GHz measured per MIL-STD-220A full load

**FCP-22: (60Hz)**  
**FCP-23: (400Hz)** 100dB attenuation from 14 kHz to 10 GHz measured per MIL-STD-220A full load.

**FCQ-22: (60Hz)** attenuation from 9 kHz to 10 GHz measured per MIL-STD-220A full load.

FCP-11 Series 60 Hz  
FCP-12 Series available for 400 Hz

Part No	Current (AMP S)	Line to Ground Voltage		Frequency (Hz)	Dimensions (Inches)			AWG	APPR WT (LBS)
		VAC	VDC		A	B	C		
FCP-11-5	5	277	600	0-60	9	4	4	10	10
FCP-11-20	20	277	600	0-60	20	4	4	10	15
FCP-11-2x20	2x20	277	600	0-60	24	7	4	10	15
FCP-11-30	30	277	600	0-60	20	4	4	10	20
FCP-11-2x30 *	2x30	277	600	0-60	20	7	4	10	30
FCP-11-4x30 **	4x30	277	600	0-60	20	14	4	10	30
FCP-11-60	60	277	600	0-60	24	4	4	6	25
FCP-11-60	60	277	600	0-60	24	4	4	6	25
FCP-11-100	100	277	600	0-60	29	4 1/2	4 1/2	2	30
FCP-11-200	200	277	600	0-60	31	8	5 1/2	4/0	60
FCP-11-225	225	277	600	0-60	31	8	5 1/2	4/0	60
FCS-4x200***	200	277	600	0-60	34	24	5 1/2	4/0	60

\*Dual filters may be used in 3 phase systems up to 480 volts phase to phase

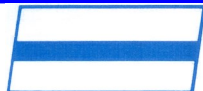
\*\*Special Filter 100dB from 14kHz to 13GHz

\*\*\*Special Filter 100dB from 30MHz to 13GHz

FCP-22 Series 60Hz  
FCP-23 Series available for 400Hz

FCP-22-25	25	277	600	0-60	20	4	4	10	20
FCP-22-30	30	277	600	0-60	20	4	4	10	20
FCP-22-4x30	4x30	277	600	0-60	20	16	4	10	60
FCP-22-50	50	277	600	0-60	24	4	4	6	25
FCP-22-75	75	277	600	0-60	24	4	4	6	25
FCP-22-100	100	277	600	0-60	29	4 1/2	4 1/2	2	30
FCP-22-150	150	277	600	0-60	31	8	5 1/2	4/0	60
FCP-22-200	200	277	600	0-60	31	8	5 1/2	4/0	60

1 3/8 Dia. Clearance hole recommended for 1-11 1/2 NPSM conduit

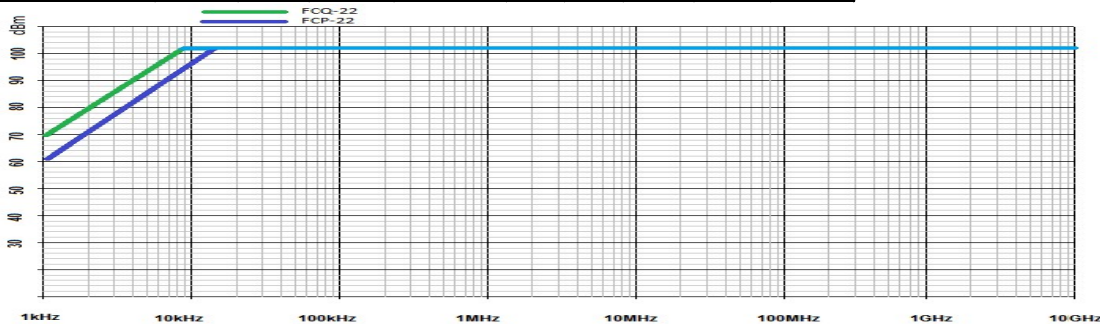




## *RF Power Line Penetration Filters for shielded enclosures (FCP-11, -12, -22, -23)*

FCP-22 Series 60 Hz in Dual, Triple\* and Quadruple configuration  
FCP-23 Series available for 400 Hz

Part No*	Current (AMPS)	Line to Ground Voltage		Frequency (Hz)	Dimensions (Inches)			AWG	APPR WT (LBS)
		VAC	VDC		A	B	C		
FCP-22-3x20	3x20	277	600	0-60	24	12	4	6	50
FCP-22-2x30	2x30	277	600	0-60	24	8	4	10	40
FCP-22-2x50	2x50	277	600	0-60	24	8	4	6	50
FCP-22-2x63	2x63	277	600	0-60	24	8	4	5	50
FCP-22-2x100	2x100	277	600	0-60	29	9	4 ½	2	50
FCP-22-4x30	4x30	277	600	0-60	24	16	4	6	100
FCP-22-4x63	4x63	277	600	0-60	24	16	4	6	100
FCP-22-4x200	4x200	277	600	0-60	31	23	12	2	400



\* FCP-22 AND 23 SERIES 100dB from 14KHz TO 10GHz measured in a 50 Ω system per MIL-STD 220A load condition

\*\* FCP 11 AND 12 SERIES 100dB from 100kHz TO 10GHz measured in a 50 Ω system per MIL-STD 220A load condition

\*\*\* Also available in FCQ-22 SERIES 100dB from 9kHz to 10GHz

### SPECIFICATIONS

#### ELECTRICAL

**CURRENT RATING:** The filters shall be capable of withstanding 140% of rated current for 15 minutes without deterioration

**INSERTION LOSS:** The filters shall provide specified insertion loss of 100 db minimum over its indicated frequency range when measured in accordance with MIL-STD-220A

**VOLTAGE:** The filters shall be capable of operating continuously at full- rated voltage and withstanding an initial test of twice the rated voltage for one minute

#### MECHANICAL

**CASE:** The filter case shall be made of cold-rolled steel

**CONSTRUCTION:** Input and output terminals shall be completely enclosed in RF shielded compartments. Cover on the input compartment shall be screw-down type

**FINISH:** All filter cases shall be made corrosion-resistant with suitable plating

**IMPREGNANT:** The impregnant shall be non-flammable as classified by UL and MIL-F-15733

**TERMINALS:** The terminals shall be made of high temperature ceramic

